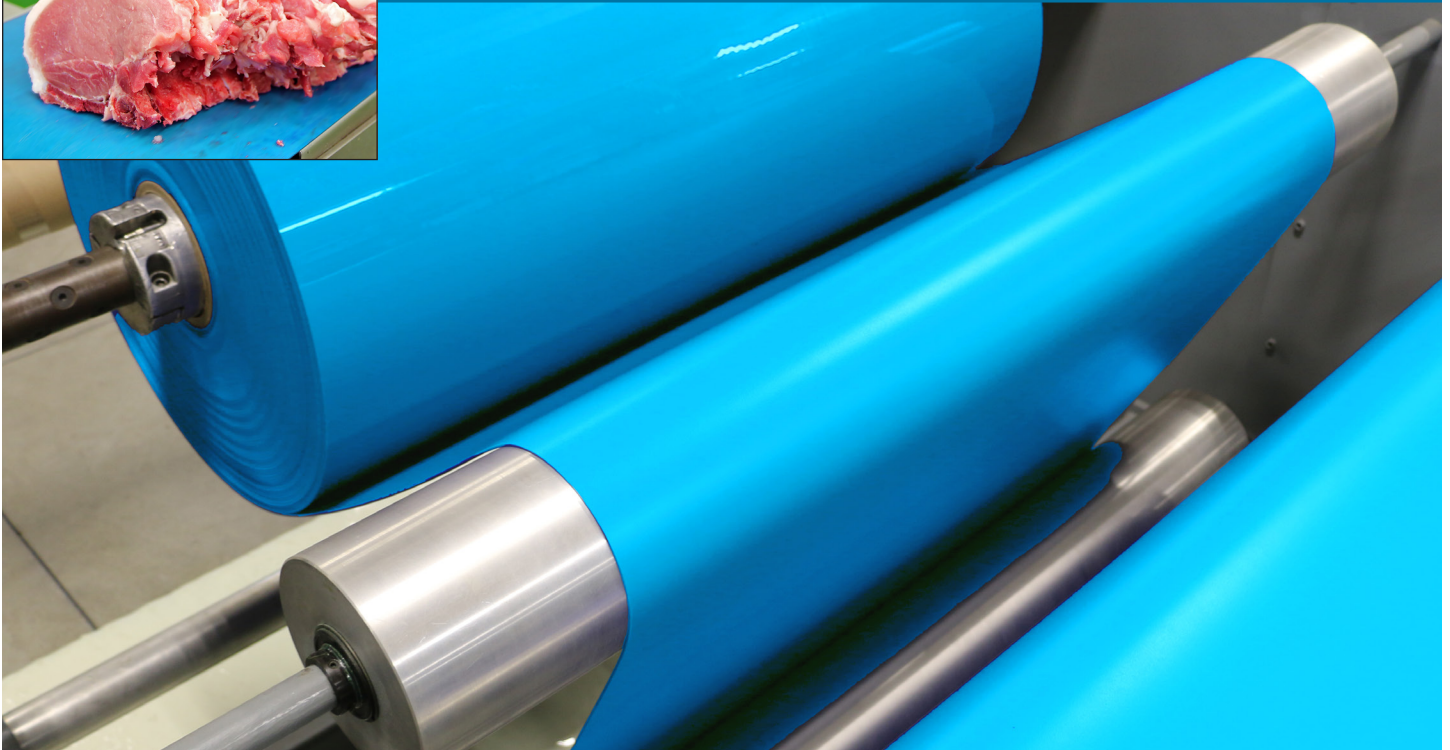


AE Agilext

Hygienic Food Belting



Monolithic urethane belting is the food processor's first choice for conveying

- › Reduces the risk of microbiological propagation
- › Minimizes foreign matter contamination from belt breakage
- › Clean-in-place (CIP) appropriate
- › Environmentally "green" - reduces water usage and waste water disposal
- › Lowers total cost of ownership

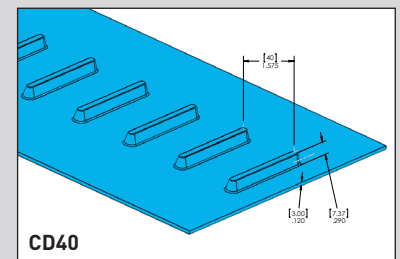
Agilext "blue belt" offers significant advantages over other belt types:

- › Compared to fabric coated flat belts
 - No frayed edge that can become a bacteria harbor point
 - Positive drive design eliminates belt slippage
- › Compared to plastic modular belting
 - Easier to clean, greatly reduces pathogenic bacteria risk
 - Eliminates risk of food contamination from broken pins and hinges
 - 30% lighter and quieter - extends motor and bearing life

PRODUCT OVERVIEW

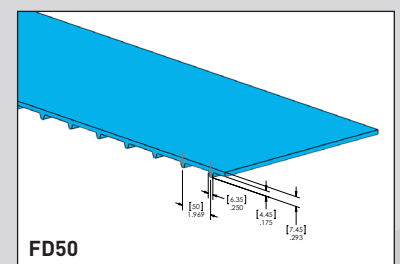
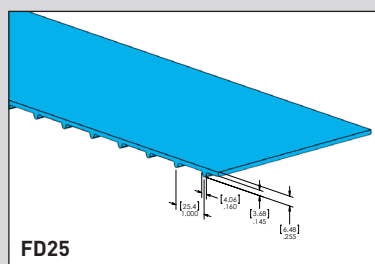
CENTER DRIVE CD40

- › 75mm wide drive tooth - the original toothed hygienic belt design
- › Self-centering
- › Single or dual lug, depending on belt width



FULL DRIVE BAR FD25 and FD50

- › A drop-in replacement for most plastic modular belting
- › Efficiently distributes torque across entire belt width
- › Small minimum pulley diameter (50mm) for the 25mm pitch belt



FLAT BELTING FB3

- › For frictional drive applications
- › No frayed edges as often found on fabric-coated flat belting
- › 50mm minimum pulley diameter for better handoffs
- › Corded construction only

BELT CONSTRUCTIONS

Agilext offers two belt constructions - an aramid corded product line using a softer urethane and a cordless product using a higher durometer resin to minimize stretch. Both product lines are made using ether grade resin for excellent chemical resistance and hydrolytic properties. The corded line offers excellent ultimate strength for high torque applications that makes it appropriate for high load, incline and long belt length applications. The cordless product line offers ease of welding and secondary fabrication.

Key Attributes

Belt Description	Tension Member	Hardness	Tensile Strength	Fabrication Workability	Abrasion Resistance	Hydrolytic Stability	Coefficient of Friction
Cordless Belt	-	55 D	Better	Good	Best	Best	Best
Corded Belt	Aramid Cord	50 D	Best	Best	Good	Best	Better

Urethane

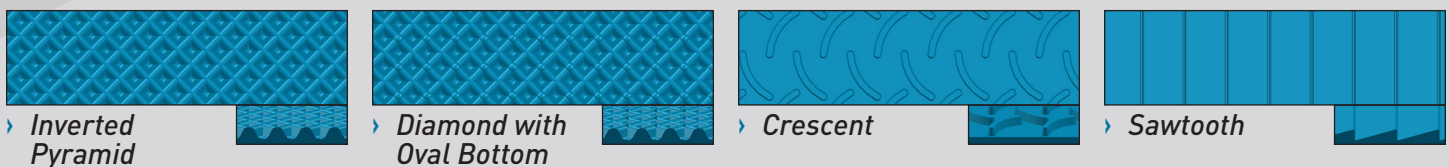
- › An ether grade urethane specifically chosen for its chemical resistance and wide process window in secondary fabrication
 - Suited for aggressive cleaning protocols and detergents
 - Most other blue belts are made from *ester* grade urethanes and don't offer the same degree of chemical resistance

Available additives

- › Metal detectable
- › Custom colors

Available Surface Finishes

- › Satin (standard)
- › High gloss
- › Light emboss/Inverted pyramid
- › High release emboss/Diamond pattern with oval bottom
- › Crescent top
- › Sawtooth top



CORDLESS BELT SPECIFICATIONS

Belt Type	Center Drive	Full Drive Bar	Full Drive Bar
Designator	CD40	FD50	FD25
Colors	Light Blue, Dark Blue, White		
Hardness	55 D	50 D	50 D
Pitch (mm)	40	50	25
Thickness mm (in)	3.0 (.120")	3.0 (.120")	2.8 (.110")
Roll Stock Width mm (in)	1500 (59")	1500 (59")	1219 (48")
Roll Stock Length m (ft)	60 (200')	60 (200')	60 (200')
Max Pull N/mm	7.7	7.7	5.3
Belt Weight (Kg/m ²)	3.9	4.2	3.9
Min. Pulley Dia. mm (in)			
> -4° C	124 (5")	100 (4")	50 (2")
< -4° C	150 (6")	150 (6")	75 (3")
Min Backbend Dia. mm (in)			
> -4° C	150 (6")	150 (6")	100 (4")
< -4° C	250 (10")	250 (10")	125 (5")
Service Temperature Range C°	-10 to 70	-10 to 70	-10 to 70
C of Friction (dynamic/static)			
vs. UHMW			
Wet	.35/.58	.35/.58	.35/.58
Dry	.20/.30	.20/.30	.20/.30
vs. Stainless Steel			
Wet	.40/.57	.40/.57	.40/.57
Dry	.38/.41	.38/.41	.38/.41

CORDED BELT SPECIFICATIONS

Belt Type	Center Drive	Full Drive Bar	Full Drive Bar	Flat Belt
Designator	CD40	FD50	FD25	FB3
Colors	Light Blue, Dark Blue, White			
Hardness	50 D	50 D	50 D	50 D
Pitch (mm)	40	50	25	
Thickness mm (in)	3.0 (.120")	3.0 (.120")	2.8 (.110")	3.0 (.120")
Roll Stock Width mm (in)	1500 (59")	1500 (59")	1219 (48")	1500 (59")
Roll Stock Length m (ft)	60 (200')	60 (200')	60 (200')	60 (200')
Max Pull N/mm	11.4	11.4	11.4	11.4
Belt Weight (Kg/m ²)	3.9	4.2	3.9	3.5
Min. Pulley Dia. mm (in)				
> -4° C	124 (5")	100 (4")	50 (2")	50 (2")
< -4° C	150 (6")	150 (6")	75 (3")	75 (3")
Min Backbend Dia. mm (in)				
> -4° C	150 (6")	150 (6")	100 (4")	75 (3")
< -4° C	250 (10")	250 (10")	125 (5")	115 (4.5")
Service Temperature Range C°	-10 to 70	-10 to 70	-10 to 70	-10 to 70
C of Friction (dynamic/static)				
vs. UHMW				
Wet	.35/.58	.35/.58	.35/.58	.35/.58
Dry	.20/.30	.20/.30	.20/.30	.20/.30
vs. Stainless Steel				
Wet	.40/.57	.40/.57	.40/.57	.40/.57
Dry	.38/.41	.38/.41	.38/.41	.38/.41

Agilext

75 Walch Drive
Portland, ME 04103

sales@agilext.com
+1 207 878-4400

agilext.com

